



3-PIN CABLE TELEMARK BINDINGS

3-Pin Cable Instructions

Congratulations on the purchase of a pair of Voilé 3-Pin Cable bindings. It is a reliable, lightweight, time tested piece of Voilé equipment.



Parts List:

- 2 Toepieces
- 2 Heel Pads
- 2 Heel Pad spacers
- 4 Heel Pad Plugs
- 4 Cables and 2 Heel pieces (assembled)
- 10 Mounting Screws (5/8"/16mm posi-drive)

Mounting

Voile recommends an authorized dealer for all binding mounts

Following ski manufacturer guidelines, determine 3-Pin Line position on ski.

Use the Voile Mounting Jig or the enclosed paper jig and a 3.5mm x 9.5mm bit to drill the ski. For metal top sheets use a 4.1mm x 9.5mm bit and be sure to tap the holes. Check the bit depth before drilling, especially for narrow profile skis.

Check the screw length to prevent "dimpling" the base, grind the screws if necessary. Mount the binding directly on the ski using wood glue or epoxy in each screw hole, according to ski manufacturers guidelines.

Insert boots into toepieces, and check that the left boot is in the left toepiece and vice versa. Center the heel pad under the telemark boot heel. The thin spacer is mounted between the heel pad and the ski top sheet. This will protect the top sheet and prevent a climbing wire from scratching the top sheet. Mark the location of each heel pad, then mark the holes.

Drill the holes, check the screw length and grind the screws if necessary. Mount the heel pad and heel pad spacer. Install the heel pad plugs by tapping them in with a small hammer.



3-PIN CABLE TELEMARK BINDINGS

Sizing:

Once the toe piece is mounted, size the heel pieces to the boots. The standard cables are designed to fit up to Men's 13, they may need to be shortened for smaller sizes. Hook the Cable Assembly on to each side of the toe piece from the top. Bend the hooks slightly to contour the boot, this allows the cable to pivot freely. (SEE FIGURE 2)

Check to see that the hooks are seated properly. If the heelpiece does not pivot freely damage to hook may occur. (SEE FIGURE 3)

With the heel lever closed and located over the outside edge, the Cable Assembly should be adjusted so the heel assembly is centered on the ski. To adjust the cables remove the Cable Assembly and screw (to shorten) or unscrew (to lengthen).

Correct adjustment of the Cable Assembly provides an audible snap when the lever is engaged. Make sure there is at least 1/2 inch of each cable in heelpiece threads. (SEE FIGURE 4)

The cable length may need to be shortened. Voilé recommends NO MORE THAN 1 INCH OF EXCESS SPRING stick out past the heelpiece. (SEE FIGURE 5) Use a heavy duty wire cutter or small bolt cutter. Be sure to grind or file the sharp cut edges.

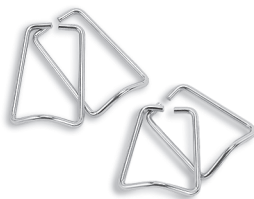
Important Tip:

If the lever pops open while skiing, lengthen the cable on the lever side and shorten the cable on the inside. This will increase the cam angle and keep the lever closed more tightly.

Accessories for your 3-Pin Cable telemark binding:



Anti-Ice Tape 3-Pin
Part# 705



Climbing Wires - 48mm or 58mm
Part#702-AS or 702A

The Voilé 3-Pin Cable binding is warranted by the manufacturer against any defects in materials or workmanship for a period of one year. Warranty service and replacement parts are available directly from Voilé.

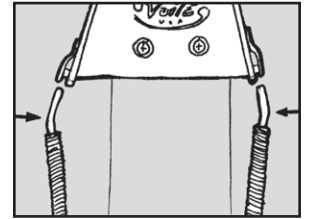


FIGURE 2

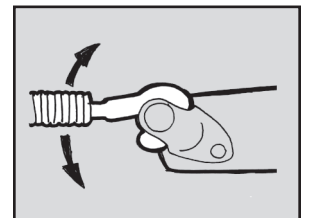


FIGURE 3

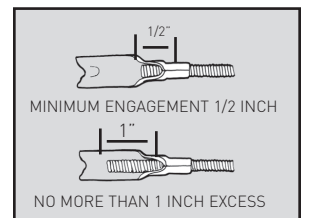


FIGURE 4

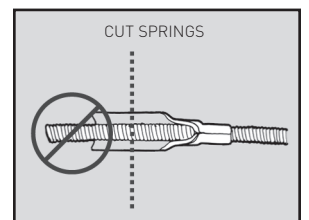


FIGURE 5

WARNING:
**THE VOILE 3-PIN CABLE IS NOT
A SAFETY BINDING AND HAS
NO RELEASE MECHANISM**

Backcountry/Telemark skiing is an inherently dangerous sport in which there is always the possibility of bodily injury and death. VOILE 3-PIN CABLE is not a safety binding and therefore does not decrease the inherent risk of injury associated with the sport of backcountry skiing. The user of this product is solely responsible for learning proper skiing techniques, avalanche awareness, and exercising good judgment.

The manufacturer, distributor, wholesaler, and retailer hereby expressly disclaim any liability for personal injuries sustained by use or misuse of this product.

