



----- Cut here to remove. Do Not Tear! -----

## SLATER UL 3+ SET UP INSTRUCTIONS

1. Remove contents from stuff sack. Spread tent body out on ground.
2. Assemble the poles. One single pole and one with two hubs. Be careful to insert each pole section into the next by hand instead of allowing the shock cord to snap them together to ensure each pole section is fully seated.
3. Lay the assembled pole set with hubs on top of the body aligning the shorter pole sections from the hub that forms the smaller "v" to correspond to the foot (narrower end) of the tent. The larger "v" section corresponds to the head (larger end with door) of the tent.
4. Insert the pole tips of the narrower "v" into the grommets of the silver webbing at the foot of the tent and the pole tips of the wider "v" into the grommets of the black webbing.
5. Attach the "H Clip" to the underside of the "PC Swivel H".
6. Attach all "Twist Clips" to the pole.
7. Using the short pole section with blunt ends that is attached to the ridge pole, insert one end into the webbing pocket that is coming off side of the tent body. Repeat on other side
8. Stake out the four corners
9. Drape the rainfly over the tent aligning the silver and black webbing of the tent body to the silver and black webbing of the fly.
10. Make sure the webbing at the corners of the rainfly is completely slackened. Attach the buckles on the rainfly to those on the tent body.
11. Feed the remaining single pole through the sleeve on the big vestibule on the underside of the fly and insert the tips in the grommet holes of the black webbing strap.
12. Stake out the vestibules.
13. Evenly tension the webbing on each corner as needed to keep the rainfly taut.
14. Stake out all guylines.

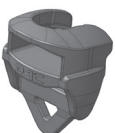
**Separate 6", large diameter pole segment included for emergency field repair. Slide repair pole over the break to act as a splint.**

## FAST FLY SET UP INSTRUCTIONS

If you purchase the optional Big Agnes footprint for your Slater tent it will enable you to pitch a shelter while leaving the tent body behind. The Fast Fly configuration requires the footprint, rainfly, poles and stakes.

1. Lay the footprint on the ground and stake out. Take note that front of the footprint is wider than the rear.
2. Assemble the pole. Notice that where the two pole sections come off the hub that one end is wider than the other end.
3. Lay the assembled pole set with hubs on top of the body aligning the shorter pole sections from the hub, that form the smaller "v" correspond to the foot (narrower end) of the footprint. The larger "v" section corresponds to the head of the footprint.
4. Insert the pole tips of the narrower "v" into the grommets of the silver webbing at the foot of the footprint and the pole tips of the wider "v" into the grommets of the black webbing.
5. Drape the rainfly over the pole structure aligning the silver and black webbing of the fly to the silver and black webbing of the footprint.
6. Make sure the webbing at the corners of the rainfly is completely slackened. Attach the buckles on the rainfly to those on the footprint.
7. Feed the remaining single pole through the sleeve on the big vestibule on the underside of the fly and insert the tips in the grommet holes of the black webbing strap.
8. To keep the top sides of the tent taut, climb inside the tent and align the short pole with the blunt ends so that the blunt ends touch the sides of the tent.
9. Stake out the vestibules.
10. Evenly tension the webbing on each corner as needed to keep the rainfly taut.
11. Stake out all guylines.

**DAC** Hardware:



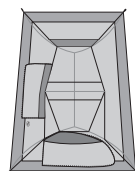
H Clip



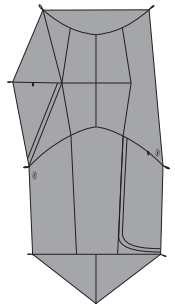
PC Swivel H



Twist Clip



Slater UL3+  
Tent with Fly  
and Tent





----- Cut here to remove. Do Not Tear! -----



Slater UL 3+

### Thanks for choosing a Big Agnes tent!

Please feel free to contact us if you have any questions or comments.

[tech@bigagnes.com](mailto:tech@bigagnes.com)

## HELPFUL HINTS FOR TENT SET UP

- Our tents are easy to set up but we suggest you practice once at home before using them for the first time to avoid late night bickering with tent mates while fumbling around in the dark.
- Before pitching tent, clear campsite of debris that may pierce tent floor.
- Big Agnes tents are all freestanding, but we recommend staking them out to increase space and keep your tent from becoming a tumbleweed.
- Hang onto your stuff sacks or they'll blow away and create backcountry litter.
- Pull on the pole sleeve fabric when inserting poles to avoid any bunching in the material.
- Push rather than pull poles through pole sleeves.

## TENT CARE

### Storage

Always make sure your tent is dry and free of debris before storing. Stuff or fold your tent a different way each time to avoid permanent creases. Store in a cool, dry place. Never leave your tent in hot temperatures (such as a car trunk or attic space), as it will damage the material coatings. Storing your tent damp can result in mildew growth, which may cause your tent to smell, leak or delaminate. Mildew damage is not covered under warranty.

### Cleaning

For light cleaning, you can sponge the tent with warm water. If it's necessary to wash the entire tent, always use cleaners recommended specifically for tents. We recommend McNett Mirazyme cleaner, or Nikwax Tech Wash. Do not dry clean or machine-wash your tent. Detergents and dry cleaning solvents will damage the fabric and ruin waterproofing. Never use hot water, bleach, liquid detergents or dishwashing liquids.

### Seam Sealing

Seam tape alone is durable enough to prevent water leakage. Any seams that have been taped do not need to be seam sealed with a liquid sealer unless you want extra protection. Make sure the seam-sealer is completely dry before re-packing your tent. Damage caused by misapplication may void warranty.

### Zippers

Keeping your zippers clean will help keep the coils and sliders from wearing out. If filled with dirt, vacuum or brush zippers before storing tent. Try to avoid liquid lubricants because they attract dirt.

### Repairs and Warranty

All Big Agnes tents are guaranteed against manufacturing or material defect. We do not warranty products damaged from normal wear and tear, alteration made by owner, misuse, accidents or damages caused by uses other than intended. Damage due to misuse, normal wear and tear, or improper care may be repaired, at the discretion of Big Agnes, at a reasonable charge. Tents returned for repair must be clean and free of debris.



For more information on Tent Care or our Warranty and Return policy, see [www.bigagnes.com](http://www.bigagnes.com) or call 970-367-4400.

P.O. Box 773072 • Steamboat Springs, Colorado • 80477

Toll Free: 877.554.8975 • [www.bigagnes.com](http://www.bigagnes.com)