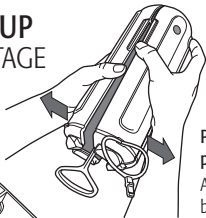
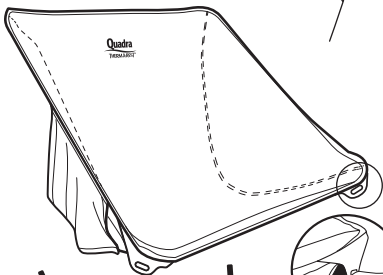
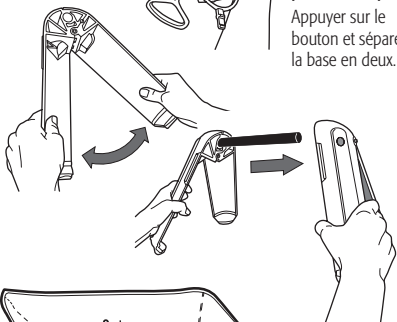


SET UP MONTAGE



Push button and
pull halves apart.

Appuyer sur le
bouton et séparer
la base en deux.



BACK LEGS:
Long Poles

PIEDS ARRIÈRES :
montants longs.

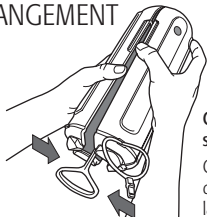


FRONT LEGS:
Short Poles

PIEDS AVANTS :
montants courts.



STORAGE RANGEMENT



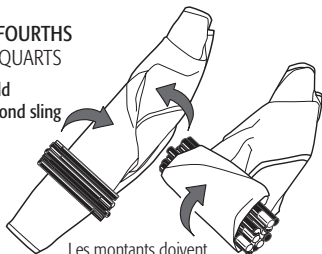
PUSH
APPUYER

Connect leg sections.

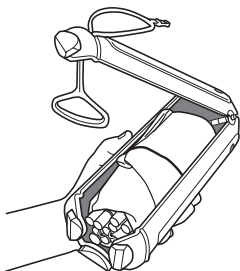
Connecter les deux moitiés de la base.

FOLD IN FOURTHS PLIER EN QUARTS

Poles should extend beyond sling



Les montants doivent dépasser de la toile.



Swing open one leg and place sling and poles inside.

Déplier l'un des pieds et glisser la toile et les montants dans la base.

Pull carry handle up through middle, close and fasten with round loop.

Tirer la poignée de transport jusqu'au milieu. Fermer le pied et verrouiller avec la boucle ronde.

