

ROTTEFELLA XPLORE

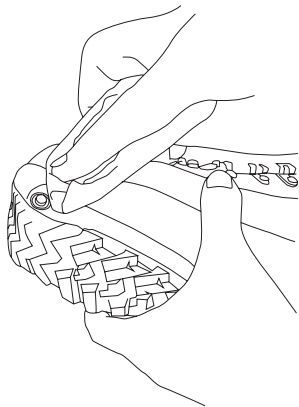
The SpringPin mechanism requires maintenance at the beginning of every season. If the system is used in humid conditions more frequent maintenance is required.



Scan the QR code
to see the
instruction video

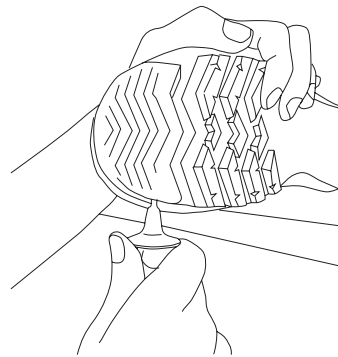
1 Preparing SpringPin

Remove any residual debris from the pins so that the area is clean.



2 Draining the mechanism

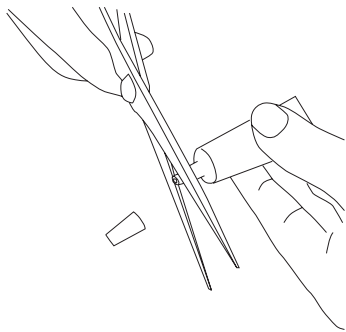
Place the boot on the work surface, as shown in the illustration with the mechanism exposed. Press the nozzle into the boot all the way in. Repeat until drained, 10-15 times on each side.



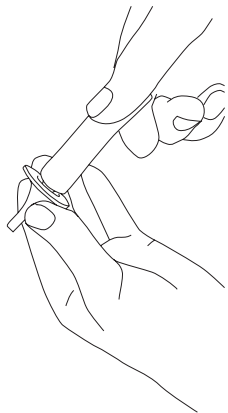
ROTTEFELLA XPLORE

3 Refilling the system with grease

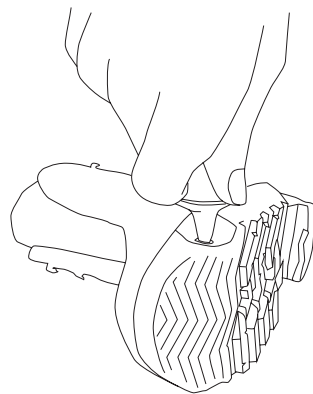
Remove the cap from the grease tube and cut off the tip.



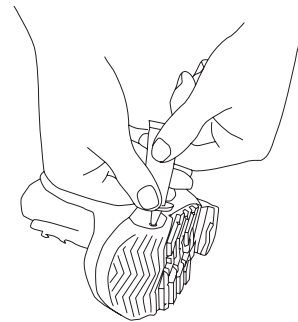
Screw the provided nozzle onto the grease tube, be careful not to squeeze the tube as it can release grease.



Put the boot on the floor, apply pressure using your knee to hold it in place. Push the pin all the way in using the grease tube nozzle.



Squeeze the grease tube hard for 10 seconds, and make sure the nozzle seals against the mechanism so that grease does not leak.



Stop applying pressure to the grease tube before removing it from the boot. Repeat this process 2-3 times on each side of the boot to fully lubricate the pins.

A tube of grease is enough to fill a pair of boots twice. See more information on rottefella.com.